

GSMRM ZEPHYR

Edition 2016

Spring 2015-Spring 2016

EBMES REPORT

2015 has come and gone. We had a great run season with high attendance numbers. Thanks to all the members that put in time to run trains for the public. The theme days have been popular with the public, and also the Scavenger Hunt sheets. I occasionally walk up and down the aisle talking to people. If they are new I ask them how they found us. Most found the Club surfing the internet, the discount library coupons, and Groupon. Those three have greatly increased the public visiting us. We have also increased visits by school groups and senior groups on our Wednesday open day. I enjoy talking to seniors about the old days and the trains of those times. Saturdays have had good public attendance on many of those days.

Our Trial Membership continues to bring in new people. We get persons from beginners to ones that have been modeling trains for a long time and are good at teaching others. We have been able to hold our dues rates without increasing them. This has been due to the Club Store bringing in good money, and also Scales able to sell donated items they money receive and use it for their various scale projects. This coming run season look for new additions on all the layouts.

Lastly, our store now has a new cash register system that went into effect last October. It is much easier to operate and ties directly into our accounting system and we now get better reports. Members like it so we should get more volunteers to help in the store. Also, because of the drought over the last couple of years we could not adequately maintain the plants in the front area planter bed. This year with all the rain we've had we should be able to plant new ones on the annual Clean-Up Day. — *John Fagan, EMBES President and CFO.*

REMODEL COMPLETE

During the last year, we completed most of the work on the remodel of our meeting rooms. Many of our members have been working on the remodel project started since it's start in March, 2013. Dave Illich took over as project manager and under his directional the wiring for Boardroom, Library, Meeting room, Kitchen, and Store was redone



Meeting room after carpet installed.—photo by, Dave Illich,

to bring it up to latest standards. The rooms also have internet and other communication wiring. After carpet was installed in June 2014, we replaced the ceiling tiles and installed ceiling installation in all rooms. This has greatly reduce our heating and cooling bills and makes for more conformable situation. We hope you enjoy your next visit to the Golden State Model Railroad Museum. Member may visit our web site to view remodel pictures from day one to completion. Many thanks to all who have helped make this a successful project! — *Dave Illich Project Manager*

LEASE RENEWED

At the February 2016 East Bay Parks Board Meeting in Oakland, the 2nd half of our current lease was on the agenda. Dave Illich, Walt Freedman, Jeff Rowe, Barry Wilson and Scott Possin, Miller Knox Park Supervisor, were there to represent GSMRM. The staff made a presentation of our site and club with some of web site pictures and video clips from our club DVD. Walt also made a presentation. The board members expressed general enthusiasm for our club and approved a motion to continue our lease until Dec 31, 2021.

GSMRM LIBRARY

The renovation of the clubroom area included relocating the museum's library to the former meeting room. The room was completely refurbished with new wall covering, additional wall space, and fresh paint. New carpeting was installed and a free-standing desktop added to accommodate two laptop computer workstations. New metal shelving storage units were custom fitted to hold the museum's collections of magazines and books.



New Library, arranged and catalogued by library manager Mark Francis.—photo by Jeff Rowe,

Once the space was available for use, our collections were moved from storage to the library. The first task was to sort the magazines by title and put them in chronological order of publication. They were then placed in labeled holders and shelved. The museum currently holds 83 titles occupying about 110 linear feet of shelf pace. A catalog of titles with locations is maintained in a binder for quick reference.

The next and on-going project is to catalog and shelve the 1,000 or so books accumulated from donations over the years. Books were randomly shelved by basic subject matter and culled for duplicates that have been sold to support library needs. Software was purchased to catalog the entire collections in a process that has completed about 80 percent of our holdings. The remainder is expected to be completed this year. When cataloging is finished the next step will be to print and affix labels to the books.

The GSMRM Board of Directors has supported library projects by funding the purchase of recently available DVD versions of historical collections of popular magazines such as Model Railroader and Trains. We currently have four magazine collections on DVD. Magazines on discs frees up shelf space for other print copies. Two laptop computers were purchased and placed on the desktop for access to the DVD collections stored in the computers.

Until such time when the cataloging and labeling processes are completed use of the magazine and book collections is restricted to the library space. A procedure to allow check-out of items is hoped to be implemented in the future. At present, a policy established by the Board limits the use of library facilities to Museum members only. —Mark Francis, Library Manager

SPRING CLEANUP, POTLUCK, AND BBQ

Our annual grounds cleanup day and potluck was held on Saturday, March 20 2016. Over 40 members and family attended our annual GSM-
RM Clean-up Day, potluck and BBQ - again a great



Above: John Fagan, granddaughter Sophia, and Zoe Brown planning flower layout. Left: Bob Siemsen, Mike Leahy, plus supervisors, pushing in the old safe.



turnout! This year we concentrated on cleaning out the storage and tool sheds in preparation for parking lot pavement later this

year. Sean Dexter and Walt Smith handled the BBQ. We enjoyed a splendid buffet in the new meeting room. Thanks to all who helped with food preparations, table setup, and clean up after, and for



Above: The cooks: Sean Dexter and Walt Smith.

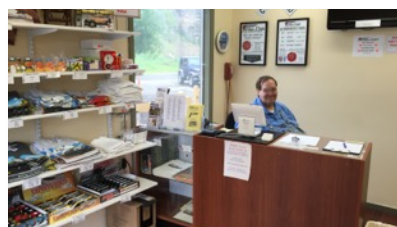
their potluck contributions. —ed.



Left: John Fagan, EBMS President Speaking—photos by Jeff Rowe

STORE NEWS

The company store, managed by Dave Illich, continues to do well. In fact, it is estimated that for each dollar in admittance, two dollars of merchandise is sold. This is a major contributor to the GSM-
RM budget. Dave has been working to make sure every store item has a bar code so



Dave Illich, GSMRM President and Store Manager —photos by Jeff Rowe

our clerks have a easy time at the register and reduce customers waiting. The major improvement this past year has been the replacement of the old, difficult to use, cash register with a modern, on-line point of sale register from Square® Inc. Martin Jahner introduced this iPad based register at a demo to EBMS in the

fall and it was quickly accepted by the members and approved by the GSMRM board. Martin did the procurement and setup along with Josh Carpoft who installed the internet access equipment. — Dave Illich.



MEMBER ACTIONS 2015

EBMES

Dec 2015/16 Board:

John Fagan President, **Morgan Denegree** as VP, **Dave Clark** as Secretary, **Walt Freedman** as Treasurer, Directors: **Sean Dexter**, **Colin Minekheim**. **Colin Minekheim** resigned Aug 2015. **Al Klumpp** appointed to fill vacancy. **Dec 2015: Bob Brown, Dave Clark and Al Klumpp** voted for **2016/2017 directors** and **Sean Dexter** replaced **Morgan Denegree** as VP.

Trainmasters for 2015: N Scale - **Claus Schlund**; HO Scale - **Jeff Robinson**; O Scale **Jeff Rowe**. Trainmasters for 2016: N Scale - **Berry Wilson**; HO Scale - **Jeff Robinson**; O Scale **Jeff Rowe**.—ed.

Other member actions:

Jan 2015: **Tyler Feazell** (N), **Andrew Roth** (N), and **Jeff Gust** (N) trial members. **Glenn Smith** resigned; Feb 2015: **Randy Smith** (HO) requested Leave of Absence. May 2015: **Jim McDaniel** trial member; July 2015: **Bill Bigley** moved to Associate member; Aug 2015: Board terminated trial membership for **Tyler Feazell** and **Jeff Gust**; **Andrew Roth** voted to Senior Member; Sept 2015: **Darrel Belsher** (N) approved as Trial Member; Oct 2015: **Jim McDaniel** (HO) voted to Senior Membership; **Eric Cisneros** (O) and **Ben Margherone** (HO) approved for Trial Membership; **Bill Bigley** placed on Leave of Absence; Nov 2015: **Steve Cleere** placed on Leave of Absence.

GSMRM

After the May 2015 election: GSMRM Officers for 2015/16: General manager - **Dave Illich**; Asst. GM - **Morgan Denegree**; Treasurer/CFO - **Phil Figel**, Asst. CFO - **John Fagan**; Secretary - **Walt Freedman**; House & Grounds - **Dave Illich**; Publicity - na; Saturday and PIC Coordinator - **Dave Illich**; Membership Secretary - **Walt Freedman**; Store Manager - **Dave Illich**.

Thanks to retiring board members for their service and congratulations to the new officers and members and for their acceptance of the Board and member responsibilities. —ed.

OUR 2016 THEME DAYS

During the 2016 season we continued with our special theme trains every 4th Sunday of the month. Some of these included Unit Train Day on April 24, Amtrak Day on May 22, ATSF/BNSF Day on June 26. Upcoming theme days will be Steam/Transition Era Day on July 24, UP/WP Day on August 28, Passenger Day on September 25, Southern Pacific Day on October 23, and concluding with "Foreign To California" Day on November 27. At our theme days you can expect to find many trains representing that day's theme. It's a good chance to see your favorite trains in operation. Refer to the GSMRM web site for latest dates.—ed.

O SCALE

Our layout operating sessions continue to be very good. We have had very few electrical or track problems which make for enjoyable and fun times during our Sunday run days. Thanks to all our members for helping to make the layout as trouble free as possible and to all our crew members who keep the trains running!

We began 2015 with our winter projects which included installing two new sidings at the PowerHouse, and our other big track project is the block 7L (aka block 7 Loop) addition which will allow the Midway division to loop trains. This 120ft. double track, with four custom built turnouts, links block 7 to block 5, and will greatly add to our operation possibilities and keep more trains running for our guests. Since the block 7L covers part of the Departure yard, new infra red motion detectors have been installed in the yard to help operators place and monitor trains. Later work involves splitting block 7L and the 5Main, 5Siding with detectors and signals to allow additional storage and traffic control.

For the O Scale Computer Interface, an 8amp NCE booster was added to the OSCI DCC signal and layout control system. The primary reason was to eliminate voltage drops on the long DCC bus lines (some over 130ft one way. Signals were added to the new Midway loop block and the last of the Zenith Division main line signals were installed in Nov 2015. The signal control system under OSCI is now stable and reliable and all the prior analog signal control wiring has been removed.

Work continues on Mt. Heller with new rock castings, ground cover and foliage. The lower section visible to the walkway is nearly complete. Coloring is has been applied to the Diablo Canyon area, but much work remains on the upper area.



Jeff Heller, Dave Goslee setting trees on Mt. Heller, Nov 2015.

—photos by Jeff Rowe

In January 2015,, several of the O Scalers attended the Craneway train show in Richmond where we sold over \$900 in donated train equipment. Later, in February we attended the O Scale West show and sold over \$1200 of donations. In April 2015, we attended the Westside Reunion, Sonora, CA. and sold \$337 of O Scale donations, mostly excess library books, and On3 surplus.

A new building and street lighting system is being planned for the Pt. Richmond city area. Several police and fire vehicles now have headlights and flashing warning lights added. There is also a police arrest scene.



Eureka buildings and streets by Mark Francis,

A demo digital camera system is being installed to improve our video surveillance of the layout. This promises to provide a more easily configurable and expandable system with better picture quality.

On the Eureka and Empire On3 layout, the Eureka yard area has more scenic work, ground covers, road work, and vegetation. Visit the O scale public web site: http://www.gsmrm.org/o_scale/index.shtml. --Jeff Rowe, O Scale Trainmaster

HO SCALE

Many members of HO have become very interested in more prototypical operations on other railroads and ours. The forty-four foot industrial section between the 16th Street Station in Oakland and Martinez could offer more operational possibilities than it was originally designed and built to be twenty-five years ago.

With much ongoing input from members interested in operations, I began the design using XTrackCAD. Initial goals were to maximize the space (width really) for the Wood Street track laid in the middle of the street in Oakland and provide space for large industries .

After creating several workable versions, we began talking about the industrial buildings. A couple of the operations oriented members suggested we take a field trip through parts of Berkeley, Emeryville, and Oakland to see industries that had rail service in the 1950's (even if they do not now) and still have rails embedded in the street.



Two of the last modules getting cork, track, Tortoises, and wires added in in GSMRM clubroom. —photos by Jeff Robinson

On 10/12/14 several HO members took a field trip to visit and photograph rail served industries based on the knowledge of David Roth, Chris Stone, and Larry Price. This led to a few more XTrackCAD versions until we reached consensus. In December of 2014, HO Scale agreed on the plans and we began constructing eight modules to replace the forty-four feet of railroad. By December of 2015, I had driven to the club one hundred and twenty times to work on the modules – all eight had cork roadbed, track, electrical drops, turnouts, and Tortoise switch machines installed and tested.

Starting right after our last run session in December of 2015, Morgan and I moved the structures and details we could save out of the way before beginning the demolition. In three days David Illich, Jim McDaniel, David Roth, Larry Price, Richard Haupt and I removed track, scenery, roadbed, and joists in the forty-four foot section so the new modules could rest above the existing L girders. By the end of January 2016, the new modules were anchored to the L girders thanks to help from Jim McDaniel and Richard Haupt.

It took most of February to install the splice plates -suggested by Ed Slintak- for the SP double track and ATSF single track mainlines and make them ready to be wired by Phil Figel.

During March, Jim McDaniel and I are making final adjustments to the ATSF grade and spiking the tracks that span module ends and adding drops so it, too, can be wired. As the month ends



New modules installed in the railroad in January 2016.

we will be testing the new track and installing temporary equipment protection so HO trains can run starting in April.

—Jeff Robinson, HO Scale Trainmaster

N SCALE

Our N-Scale Layout "continues", to get upgrades to the Signals, wiring, track work, i.e. switches, alignment of track, scenery, (although the two operating oil pumps, with plastic gears, are just about worn out, and no replacements can be found.)

The Fireworks Stand's Parking lot is overflowing, six buses, about 18 cars, even a camper (the owner) out back! During the



This is what a camera looks like above a yard of N scale track.—photos by Claus Schlund



This is what the video looks like on a smartphone screen

winter break, we are "working our fingers to the bone" to make some small changes, here and there.

The narrow gauge corner is just getting new standard gauge track thanks to Claus Schlund. Truckee's got ALL new tracks and alignment, thanks to Joel Frangquist.

OK, let me stop right here, and say that our whole team is involved in this Museum Layout, John Fagan, Morris Lyons, Rich Haupt, Al Whitecar, Danylo Hawks, Andrew Roth, and the heretofore mentioned! THEN! there's the issue whether to "daylight" a tunnel in Truckee. Some of our members, REALLY think that doing so would DESTROY the beautiful "in place" mountain that's there now.

Well, then there's the alignment thing again. We're going to change the track work through Truckee and accessibility {able to get derailed trains} in said tunnel. Reno's up for re-alignment, and future plans on the wall to add tracks just bellow Reno, about twenty scale miles or so. So, you see, constant small changes, upgrades, etc. Oh, we're on our sixth Computer! THANK YOU AGAIN MARTIN! (p.s. Martin likes running the ICE train.)

If you notice the "Front" of our layout (south end) near the "Hump Day Camel", (WARNING!, STAY AWAY FROM THE LYONS ON THE LOOSE!!) we have new signals, thanks to Danylo, Martin and Joel. Anyway, our future new signals---from

Auburn---Rocklin---Roseville, through to Sacramento---Elvas---Elvas Wye, (there's two ways to go here: 1- go towards the wall, Cal-P East & West, & Oakland Yard, or 2- keep going to the right, Lodi East & West—Modesto—Bakersfield---Kern---Sandcut. Um, you get the picture, Anyway, COME SEE US IN APRIL, when we Open again... —Barry Wilson, N Scale Trainmaster

FREE MEMBERSHIP

We offer a Free Trial Membership in one of the three scales (N, HO, O) for those interested in becoming full members. The trial period lasts up to six months and lets us get to know each other and see if there is a mutual fit. The Trial Membership can be terminated at any time, if proven to be unsatisfactory. We are looking for enthusiastic members who want to contribute to the club's and scales's activities, so regular participation is important during the trial period. —Sean Dexter, EBMES Vice President

ATTENDANCE

7378 Visitors came by in Y2015 to enjoy the Museum. This is the 4th highest attendance over the last 20 years. Last year was 3rd highest, just 100 or so more than Y2015. We are off to a good start for the 2016 season, so we may set another record. —Walt Freedman.

ARE YOU ONLINE?

In order to keep up with the times, the museum is now also present on some of the popular social networks: Facebook and Twitter. We also have a channel on YouTube. Take a look:

<http://www.facebook.com/pages/Point-Richmond-CA/Golden-State-Model-Railroad-Museum/165356379874>

Please follow us on Twitter, become a fan on Facebook, so you'll always be informed about upcoming events, and you can see the latest pictures as soon as we post them!

Also new is our online store at: <https://squareup.com/market/gsmrm/>— Martin Jahner, Walt Freedman Web coordinators; Joel Frangqvist Facebook contact



Looking Back at the 1973 SFW...

These photographs were donated to GSMRM by Doras Briggs. They represent the layouts at Emeryville around 1973. Both she and her husband, Bob Briggs, were made senior members in 1949. Photos scanned by Jeff Rowe, 24 Oct 2014, for the GSMRM web site from files found during the 2012-14 library remodel. These pictures are now available in our Library or online at: [GSMRM History](#).—*Jeff Rowe.*



GSMRM member Mark Francis continues to sell his book *Empire*, covering the development of the Timber industry in Tuolumne County. Mark Francis's just released a history of the founding of the West Side Lumber Company in CD format.

Interested persons can contact Mark at wheelhorse1@sbcglobal.net for information about availability.



Calendar

April-Dec

Museum open:

Fridays 7-10pm work time. Public welcome.

Saturdays: 12 noon - 5 pm for viewing, no trains running.

Free admission

Sundays: 12 noon to 5 pm with operating trains. Admission charged.

Wednesdays: 11 am - 3 pm for viewing only, no trains running. Free admission.

December: Open Sat and Sun 12 noon - 5 pm, trains running. Admission charged.

Check for latest info at <http://www.gsmrm.org>

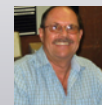


Jeff Rowe, the Zephyr editor, published an article *Trains at the GSMRM*, in the Oct 2011 issue of *Marketplace Magazine*. Check the GSMRM website at: <http://www.gsmrm.org/media/>

Contributors



Jeff Rowe
-Zephyr editor
O Scale Train
Master Member
since 2001.



John Fagan
EBMES Board
president Member
since 2000.



Walt Freedman
EBMES treasurer,
GSMRM secretary,
Web Coordinator,
Asst. Zephyr editor
Member since 1998.



Dave Illich
GSMRM General
Manager, Store
Manager. Members
since 1997.



Jeff Robinson
HO Scale Train
Masters, EBMES
Board. Member
since 1993.



Barry Wilson
N Scale Train
Master. Mem-
ber since 2002.

Golden State
Model Railroad Museum
ATTN: Zephyr
P.O. Box 71244
Point Richmond, CA 94807-1244

Editor Jeff Rowe

Associate Editor Walt Freedman

Contributing Editors

GSMRM General Mgr. Dave Illich
EBMES President John Fagan
EBMES V.P. Sean Dexter

O Scale Train Master Jeff Rowe
On3 Jim Ambrose
HO Scale Train Master Jeff Robinson
N Scale Train Master Barry Wilson

Email zephyr@gsmrm.org
Website www.gsmrm.org

Produced with Apple Pages ver. 5.6.1.

© 2016 Golden State Model Railroad Museum.
The contents of this publication may not be reproduced either in whole or in part without written permission of GSMRM. GSMRM is not responsible for the opinions expressed by its contributing editors or authors.